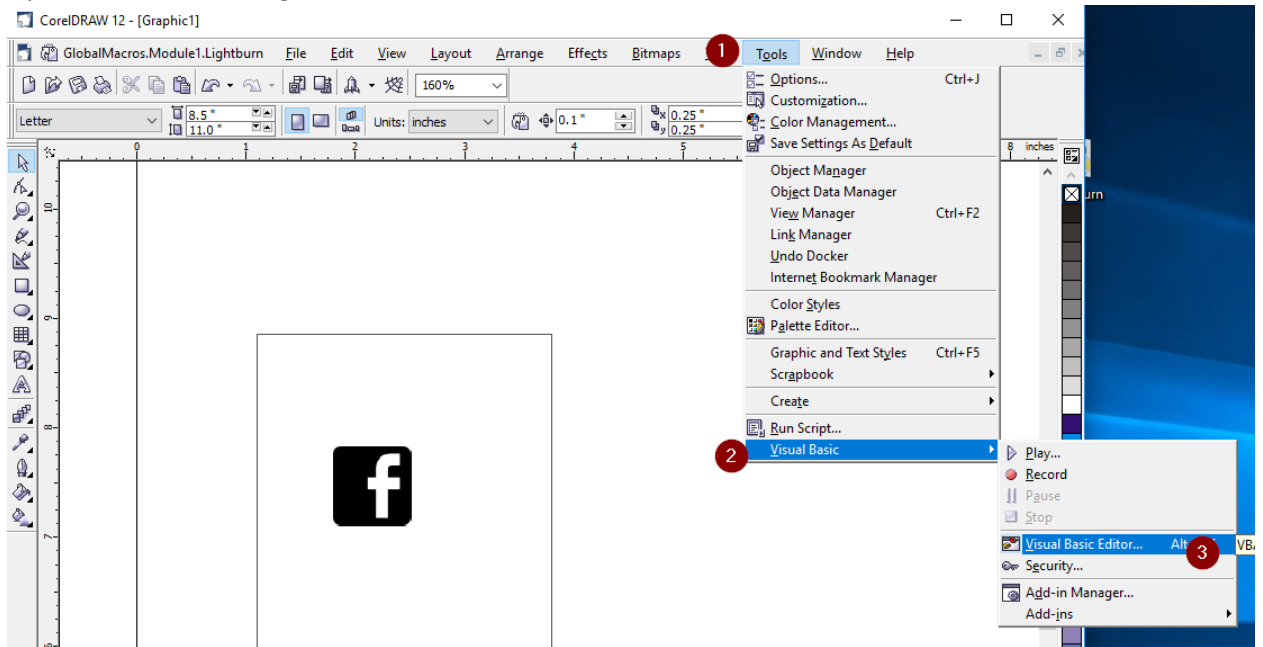
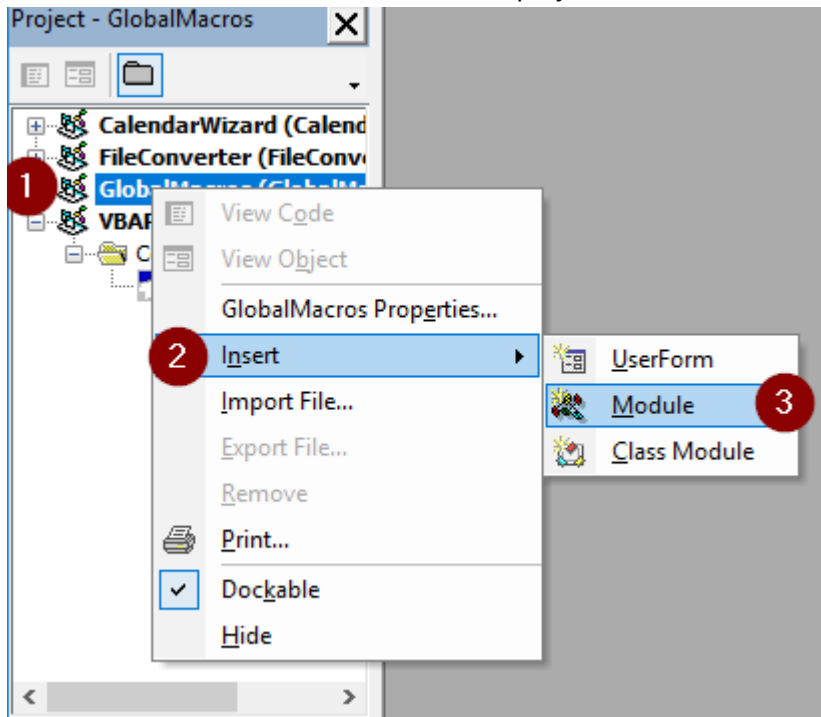


# Corel Draw export to LightBurn

1. Open the Macro Manager



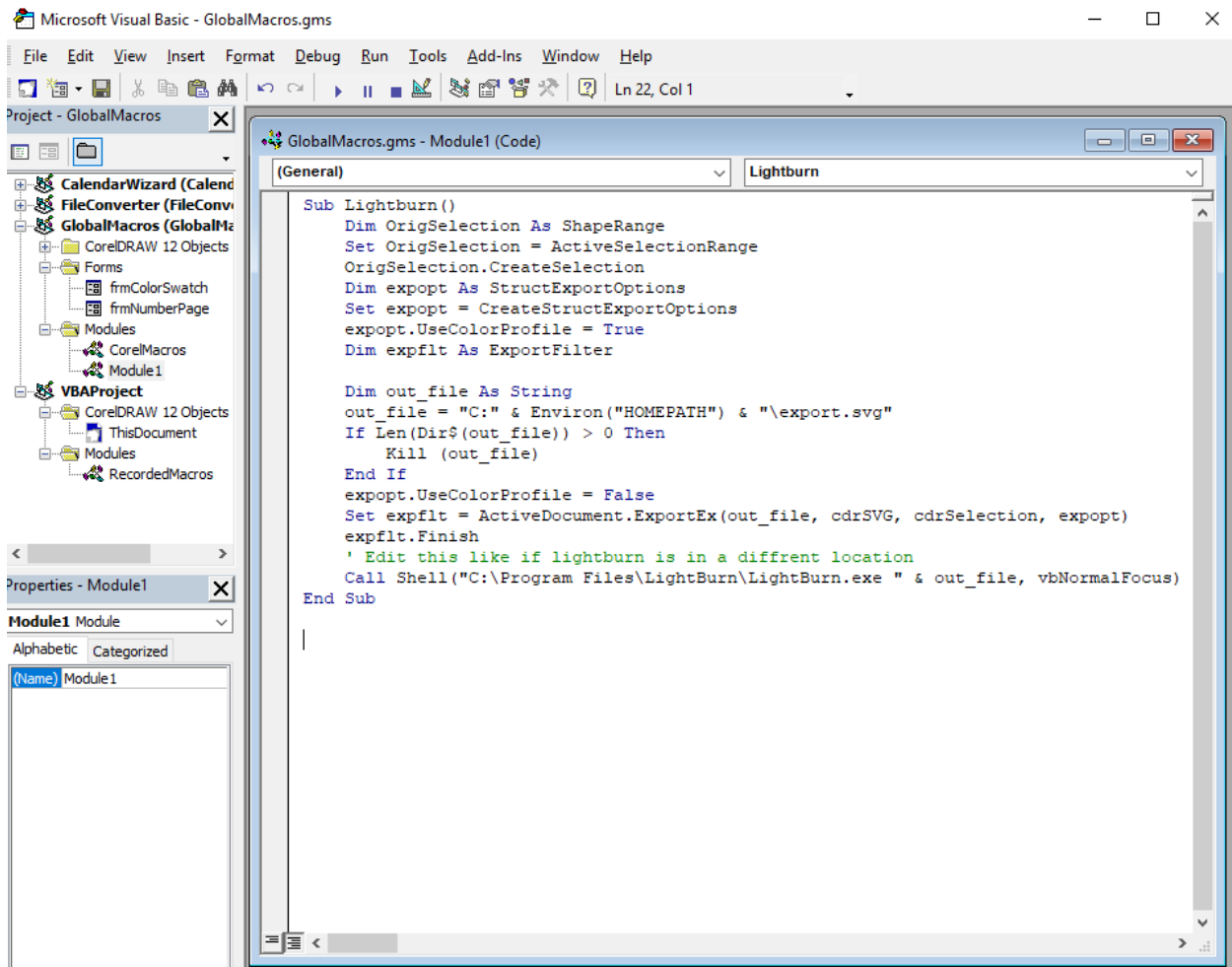
2. Create a new module in the GlobalMacros project



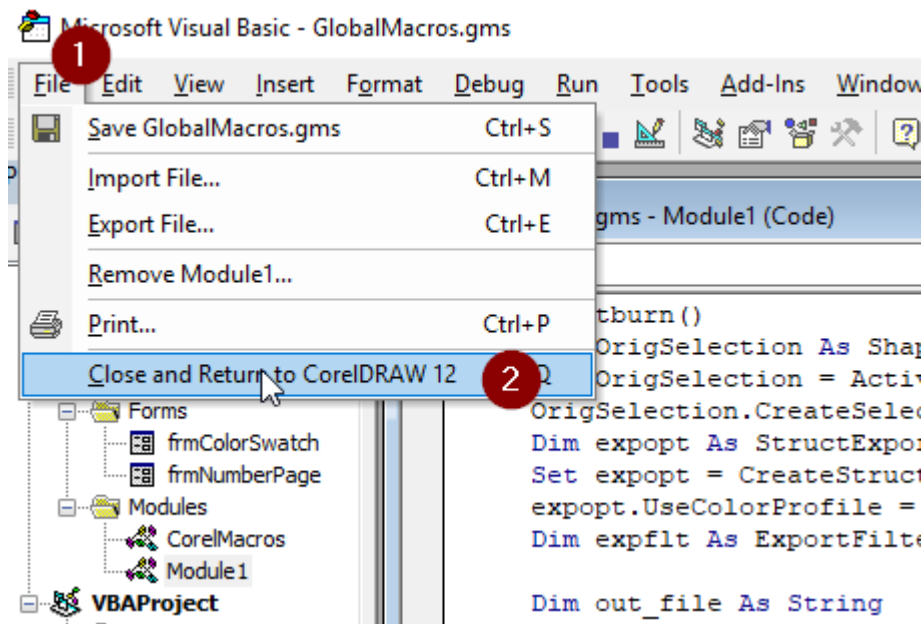
3. Copy the following into the open page

```
Sub Lightburn()  
    Dim OrigSelection As ShapeRange  
    Set OrigSelection = ActiveSelectionRange  
    OrigSelection.CreateSelection  
    Dim expopt As StructExportOptions  
    Set expopt = CreateStructExportOptions  
    expopt.UseColorProfile = True  
    Dim expflt As ExportFilter  
  
    Dim out_file As String  
    out_file = "C:" & Environ("HOMEPATH") & "\export.svg"  
    If Len(Dir$(out_file)) > 0 Then  
        Kill (out_file)  
    End If  
    expopt.UseColorProfile = False  
    Set expflt = ActiveDocument.ExportEx(out_file, cdrSVG, cdrSelection, expopt)  
    expflt.Finish  
    ' Edit this like if lightburn is in a different location  
    Call Shell("C:\Program Files\LightBurn\LightBurn.exe " & out_file, vbNormalFocus)  
End Sub
```

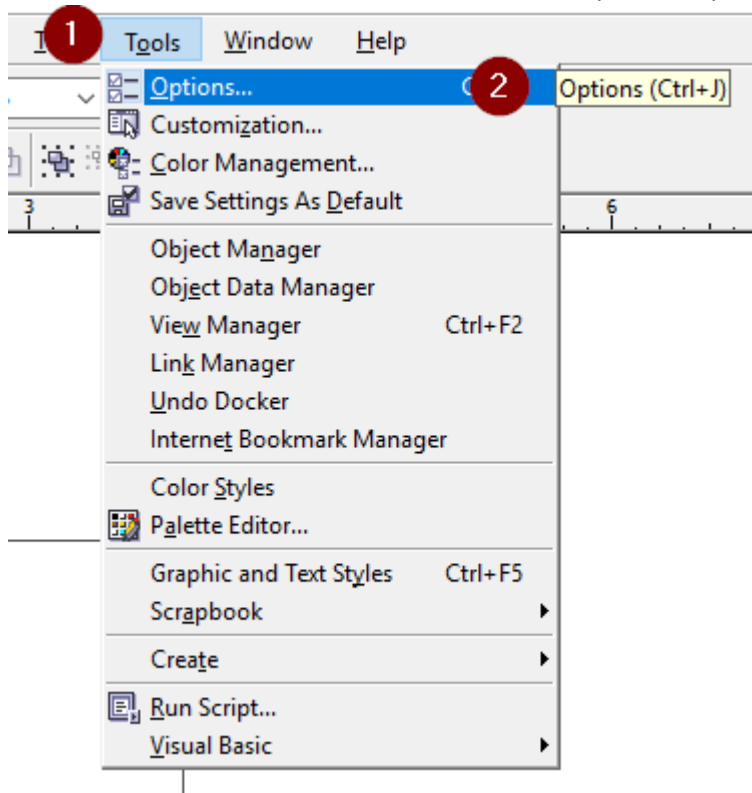
4. It should look like this.



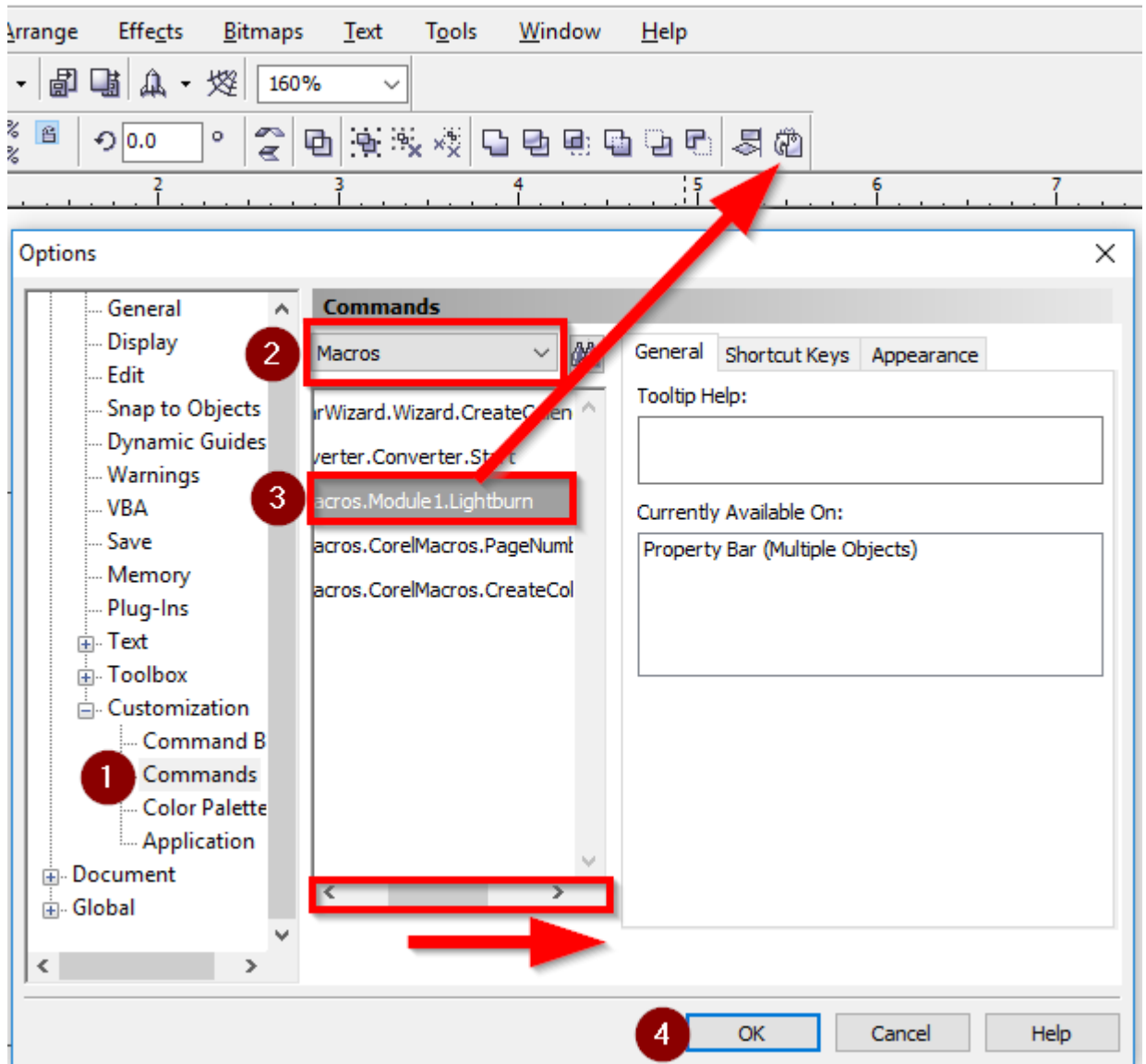
5. Close the macro editor



6. Now we need to add the button to the toolbar. Open the options menu.

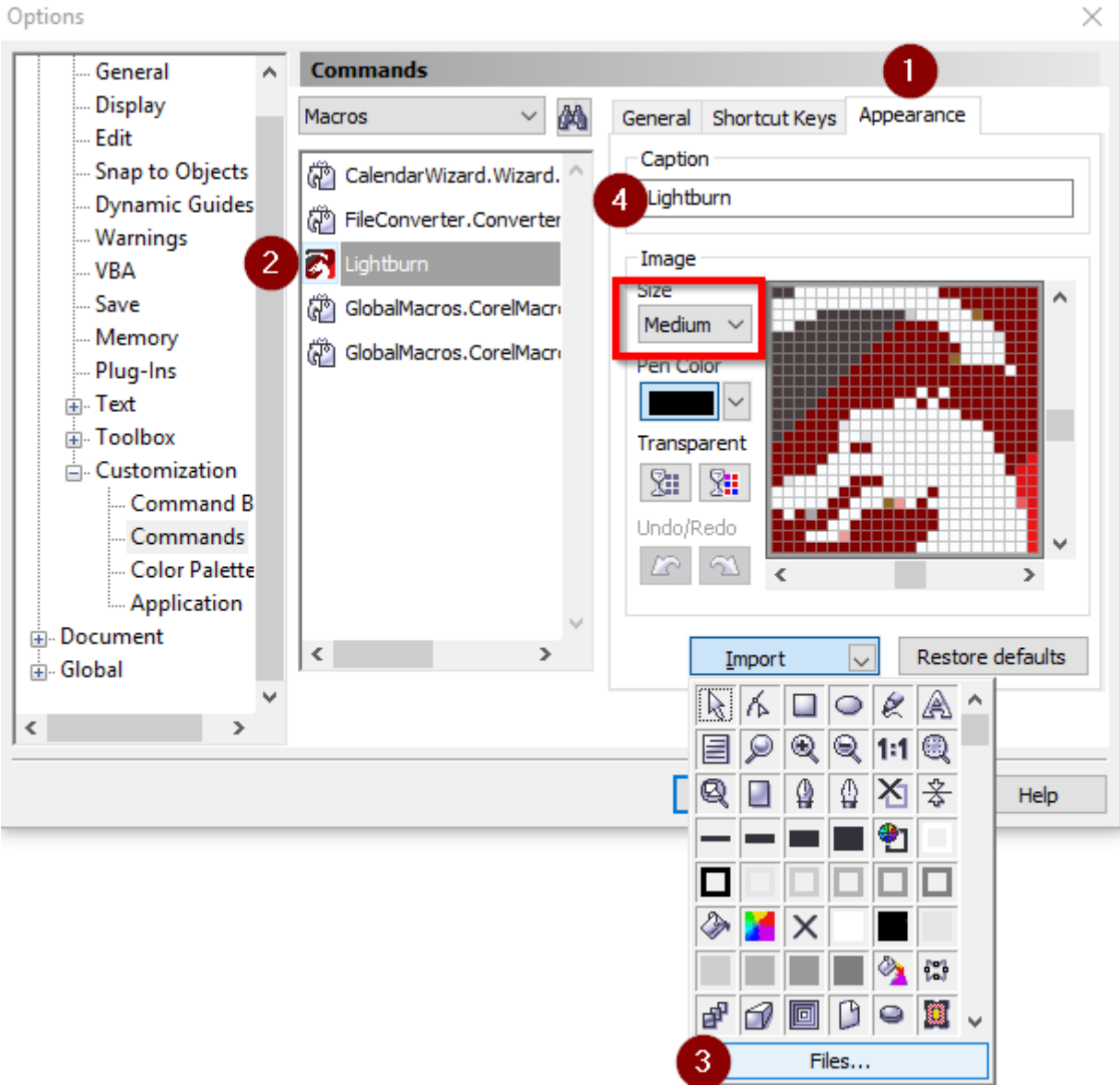


7. Select commands under the customization section and make sure the macro option is selected in the drop-down. Then drag the globalmacros.module1.lightburn macro to the toolbar.

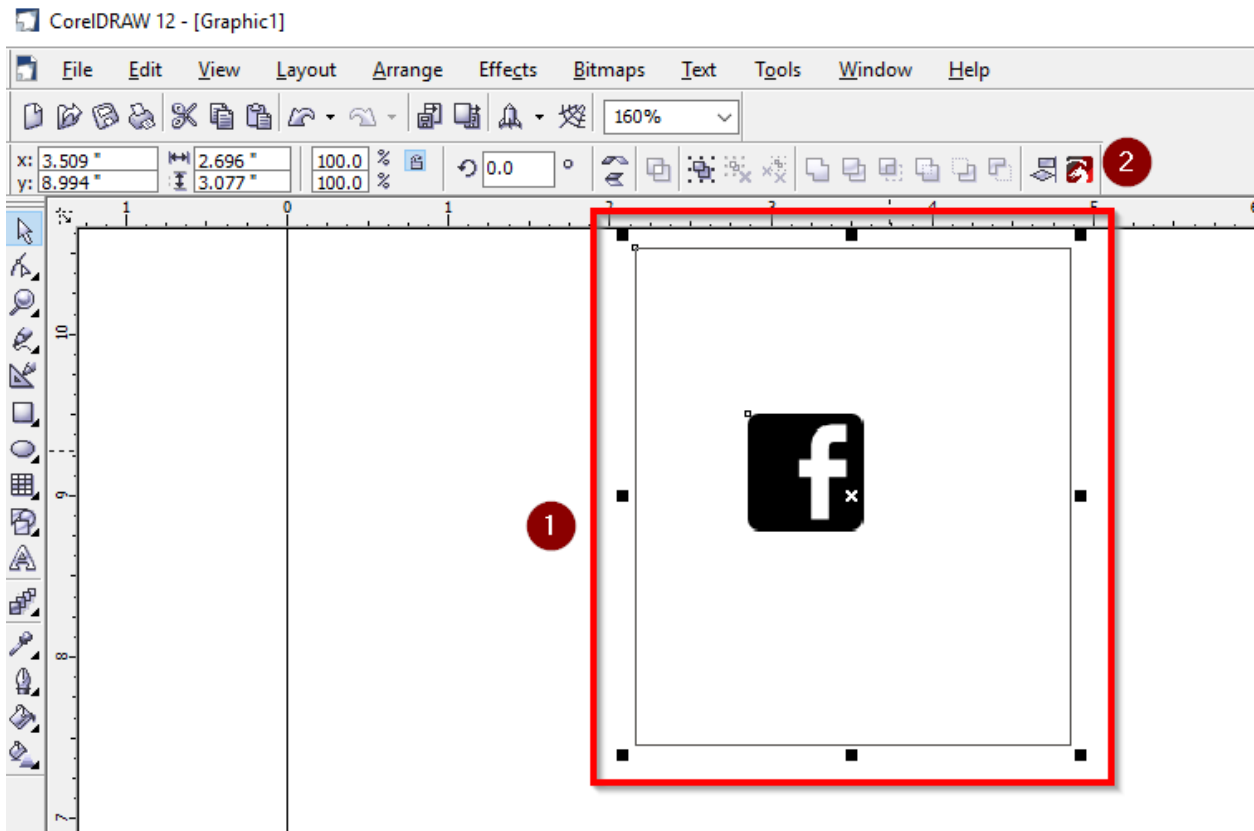


#### 7.1. Optional: Change Icon.

Select the Appearance tab and select the lightburn macro. download logo.ico from the files section in the facebook group. Click the browse button and select logo.ico. you can also set a caption which will change lightburn.lightburn to anything you want.



8. Now select the objects you want and click the button and Lightburn will be opened and the objects will be auto-imported.



9. IMPORTANT YOU MUST SAVE A DOCUMENT OR ELSE ALL THE SETTINGS WILL DISAPPEAR!